



YOUR PATHWAY TO

CREATIVE ARTS

2024/25

Loughborough
COLLEGE est. 1909



COURSE LIST

PERFORMING ARTS

Level 2 Performing and Production Arts Industry Skills..... 6

Level 3 Performing Arts..... 8

ART & DESIGN

Level 2 Art & Design 10

Level 3 Art & Design Practice 12

**THIS IS JUST A
SNAPSHOT**

Visit our website

www.loucoll.ac.uk

for more detailed info
about all our courses

Keep up-to-date:



WHILE STUDYING CREATIVE ARTS AT LOUGHBOROUGH COLLEGE, YOU'LL HAVE ACCESS TO A WHOLE HOST OF INDUSTRY-STANDARD FACILITIES IN OUR £15-MILLION ARTS ACADEMY. WE ALSO HAVE THE LATEST HARDWARE AND SOFTWARE, GIVING YOU HANDS-ON EXPERIENCE THAT WILL FEED INTO YOUR FUTURE CAREER.

Your tutors have a wide range of experience in the creative industries, having worked in everything from professional theatre to photography studios and exhibition centres. You will learn both practical and theoretical elements, informing your creative process and building strong foundations for further study.

There will be plenty of opportunities to show off your creativity with regular performances, exhibitions and more. You'll also benefit from a range of industry trips and talks from guest speakers, including theatre groups and technical professionals, allowing you to learn from their expertise.

THE ARTS ACADEMY'S INDUSTRY-STANDARD FACILITIES INCLUDE:

- Recording suites and practice rooms
- Rehearsal spaces and a dance studio
- Photography studio, dark room, and Mac editing suite
- Art and design studios
- 212-seat theatre

FEES & FUNDING

Funding your course may be easier than you think. To see if you qualify for funding support with your tuition fees, see the table below:

Please refer to the coloured columns in the table below if you are:

- In receipt of JSA or ESA or Universal Credits OR
- Unemployed and in receipt of means tested benefits OR
- Employed and earn less than £20,319 annual gross salary

AGE AND STUDENT CIRCUMSTANCE									
COURSE LEVEL	16-18	19-23 AND RECEIVING BENEFITS/LOW INCOME		19-23		24+ AND RECEIVING BENEFIT/LOW INCOME		24+	
		First time studying this qualification	Completed a qualification at this level previously	First time studying this qualification	Completed a qualification at this level previously	First time studying this qualification	Completed a qualification at this level previously	First time studying this qualification	Completed a qualification at this level previously
ESOL	★	★	★	★	★	★	★	★	★
ENTRY LEVEL	★	★	★	★	★	★	★	★	★
ELIGIBLE LEVEL 1	★	★	★	★	★	★	★	★	★
ELIGIBLE LEVEL 2	★	★	★	★	★	★	★	★	★
ELIGIBLE LEVEL 3	★	★	★	★	★	★	★	★	★
LEVEL 3 FREE COURSES FOR JOBS OFFER	★	★	★	★	★	★	★	★	★

★ Eligible for funding, no fee to pay

★ Not eligible for funding, likely to have to pay

★ Not eligible for free funding, however Advanced Learner Loans are an option instead

This information is based on current government funding guidelines for September 2024 entry, and are subject to change at any time.

PLEASE NOTE:

The table provides generic funding guidance.

To ensure that you are entitled to funding, we will fully assess your eligibility prior to enrolling you.

Please ensure that you provide all prior qualifications held when asked to do so, as the college will retrospectively charge tuition fees should differing circumstances come to light.

Some courses are defined as full cost and as such do not qualify for free tuition.

Other courses are also not eligible for adult funding.

All of the above information applies to students who have resided in the UK/EEA for the past 3 years and are eligible for home funding.

APPLICATION PROCESS

2  1

APPLY

The first step in joining Loughborough College is to **submit an application form**, this can be done online or via a paper form. After receiving this, we will acknowledge receipt of your application.

HAVE YOU GIVEN US ALL OF THE NECESSARY INFORMATION?

Predicted Grades - you need to provide us with your predicted grades so that we can ensure you are applying for a suitable course and level. For A Level applicants, where this is not provided your application will be put on hold.

Fee Status - We may ask you to complete and return a Fee Status questionnaire based on your Nationality or your right to remain in the country.

Are your course choices right for you? - where your predicted grades indicate that the course choice(s) are not appropriate, we reserve the right to amend this, where a suitable choice is available within the same area.

 3

APPLICANT EVENT

In order to secure a place at Loughborough College, you must first **attend an Applicant Event** for your chosen course(s). **Your invite will be sent via email** so please ensure you check your spam/trash folders regularly.

Where you are unable to attend, it is important that we are notified beforehand (details on how to do this will be included in the email invite) so that we can invite you in to the next available event.

N.B. If an applicant doesn't attend two events in a row, without notifying us beforehand, then we will automatically assume that they are no longer interested and their application will be withdrawn.

4



OFFERS

After attending an Applicant Event, the course leader will make a suitable course offer and this will be sent out to you. In order to secure a place on the chosen course, the acceptance of place form must be completed and returned to us within the **specified** timeframe.

Applicants who do not accept their offer may still be considered, however priority will be given to those who accepted their offer in the **specified** timeframe.

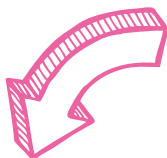
5

PRE-PROGRAMME

In order to secure a place on the chosen course, students must then **attend** a Pre-Programme experience (taster day) OR notify us with a satisfactory explanation as to why they are unable to attend. These events are **likely to be in late June/early July** and they are really important for students to attend to enable them to get a taste of what being a student at Loughborough College is like.

Sadly however this event is not aimed at Parents/Guardians/Carers. Sorry – all the fun goes to our students for this one!

6



REGISTRATION AND ENROLMENT

First you will be invited to complete an Online Registration, where you will be asked to log in and provide us with your personal details. You must also provide us with ID evidence and an appropriate photograph of yourself for your student ID badge.

Then on **National Results Day (Thursday 22nd August 2024)** you will be asked to log in again and upload proof of your results.

On, or shortly after, National Results Day you will be invited in to a Sign Up event with your chosen course area and this is where you formally sign up for your course. You will meet with a member of the teaching team who will assess your results and discuss appropriate courses.

If you do not get the grades that you are expecting then please don't worry! We will work with you to help you find an alternative option.

PERFORMING AND PRODUCTION ARTS

INDUSTRY SKILLS

LEVEL 2

THE LEVEL 2 PERFORMING ARTS COURSE IS A PRACTICAL QUALIFICATION ASSESSED ON WORK CREATED FOR PERFORMANCE PROJECTS AND SUPPORTED BY DEVELOPING A KNOWLEDGE OF THE INDUSTRY AND CAREER ROUTES.

You will begin your journey with our theatre company by exploring the role of a performer through workshops developing your technical performance skills. You will develop performance skills as you continue your journey working towards a range of solo and group performances, exploring progression routes and marketing.

Assessment is based on practical assessments and a portfolio of evidence created as you progress through the course.

DETAILS

ENTRY REQUIREMENTS

Four GCSEs at grade D/3 or above and successful participation in a workshop.

START DATE

September

END DATE

June

DURATION

1 year

COURSE COST

Aged 16–18: FREE!

Aged 19+: See page 3 for funding options

PROGRESSION OPPORTUNITIES

On completion at Merit level, with passes in all key skills, you can progress on to the Level 3 in Performing Arts.

COURSE CONTENT

- **Skills Development for Performing Arts**
- **Professional Development**
- **Creative Interpretation**
- **Audition and Portfolio Process**
- **Preparing for a Performing Arts Production**
- **Performing Arts Production**
- **Responding to a Progression Opportunity**

YOUR CAREER IN PERFORMING ARTS

IF YOU ENJOY ALL ASPECTS OF PERFORMANCE AND PRODUCTION, WHETHER THEATRE OR DANCE, A CAREER IN PERFORMING ARTS COULD BE FOR YOU.

CAREERS

ACTOR

£13,000 – £36,000

Interprets roles and characters, and brings them to life under the guidance of a director. May perform live or for recorded programmes.

CHOREOGRAPHER

£16,000 – £40,000

Creates and directs dance and movement sequences for stage and screen.

THEATRE MANAGER

£18,000 – £50,000

Plans events, liaises and negotiates with production companies, commissions new pieces of work, and takes responsibility for all theatre staff.

INDUSTRY STATS

EXPERIENCED PERFORMING ARTS PROFESSIONALS EARN UP TO

£50k
PER YEAR

THE PERFORMING ARTS SECTOR CONTRIBUTES £5.4 BILLION PER YEAR TO THE UK ECONOMY

EQUITY, THE UK'S TRADE UNION FOR PROFESSIONAL PERFORMERS AND CREATIVE PRACTITIONERS, HAS

40,000
MEMBERS

There are an estimated

291,000
jobs in music, performing and the visual arts in the UK

PERFORMING ARTS

LEVEL 3

THE LEVEL 3 PERFORMING ARTS COURSE AIMS TO PROVIDE YOU WITH THE OPPORTUNITY TO EXPLORE ALL ASPECTS OF PERFORMING ARTS.

Through weekly technique lessons and three performance projects per year, we build skills in solo and ensemble performance, collaborative theatre making, community performance, Industry knowledge and how to market yourself as a performer and a host of wider on-trend skills including problem-solving, creative thinking, communication and resilience.

Assessment is based on practical assessments and a portfolio of evidence created as you progress through the course.

COURSE CONTENT

- **Exploring Performance Styles**
- **Creating Performance Material**
- **Performing for an Audience**
- **Planning a Career in the Industry**
- **Using Development Plans to Refine Skills**
- **Producing a Personal Project**
- **Using Material for Self-Promotion and Networking**
- **Undertaking a Defined Creative or Administrative Role**
- **Producing a Collaborative Project**

DETAILS

ENTRY REQUIREMENTS

Five GCSEs or equivalent at grade 4 or above including English (and ideally maths) and successful participation in a workshop.

Progression from Level 2 internally will require successful completion at Merit standard and improvement in maths and/or English.

START DATE

September

END DATE

June

DURATION

2 years

COURSE COST

Aged 16–18: FREE!

Aged 19+: See page 3 for funding options

PROGRESSION OPPORTUNITIES

Students who successfully complete this course can progress on to employment or degree level study at a university or specialist institution.



LOUGHBOROUGH COLLEGE LEADS STUDENT TO THE WEST END PRODUCTION, LIFE OF PI

Loughborough College graduate **Payal Mistry** has found herself performing in the West End show *Life of Pi*, five years after leaving Loughborough College.

Since leaving Loughborough College, Payal has been in a BFI funded short film called 'Inertia', directed by Mat Johns, which has been entered into multiple Oscar and BAFTA Qualifying Festivals and has won an award. She has also been on the country's favourite soaps and has recently filmed for a part in BBC's *Call the Midwife*.

Loughborough College introduced Payal to a range of performance skills in drama, dance and song, and she soon realised that they are seamlessly interwoven and all-encompassing.

"I've learnt so much, especially the key foundations of Performing Arts. The tutors were absolutely lovely and they really helped build my confidence in all areas of the industry, especially when I was hesitant in the dancing and singing elements. It's only in hindsight I've found how beneficial it was to train in all three mediums.

Most importantly, there was a safe space to learn. It felt inclusive for everyone regardless of their gender, colour or creed and this made the duration of my time at Loughborough College super fun and experimental."

ART & DESIGN SKILLS

LEVEL 2

THIS COURSE WILL GIVE YOU THE CHANCE TO DEVELOP YOUR ART AND DESIGN SKILLS, WORKING ON PROJECTS TO SHOWCASE YOUR EMERGING TALENTS.

You will work with photography, 2D and 3D design, digital art, and more traditional art techniques to create a portfolio to help further in your career in art and design.

Your work will be themed around coursework set to challenge you, as well as develop both your skills and interest in art and design.

DETAILS

ENTRY REQUIREMENTS

Four GCSEs at grade D/3 or above in relevant subject areas.

START DATE

September

END DATE

June

DURATION

1 year

COURSE COST

Aged 16–18: FREE!

Aged 19+: See p3 for funding options

PROGRESSION OPPORTUNITIES

Apply to study on the BTEC Level 3 Extended Diploma in Art and Design at Loughborough College or start your career as an artist or designer.

COURSE CONTENT

- **Exploration into Materials Techniques and Process**
- **Working to an Art and Design Brief**
- **The Realization of a Personal Investigation in to a Theme**

YOUR CAREER IN ART & DESIGN

ART AND DESIGN CAREERS COME
IN ALL SHAPES AND SIZES

INDUSTRY OPPORTUNITIES

CAREERS IN ART AND
DESIGN ARE ALL ABOUT
CREATING THINGS WHICH ARE
APPEALING TO THE EYE.

CAREERS

FINE ARTIST

Salaries vary widely for art careers and are dependent on the artists talent, experience and the level of intricacy used in their work. For this reason, it's difficult to put a set figure on what they can earn.

ART IS TRADITIONALLY
CREATED PURELY FOR ITS
AESTHETIC APPEAL, WHILST
DESIGN TENDS TO REVOLVE
AROUND A PRODUCT.

PHOTOGRAPHER

Depending on the industry, salaries can start around £16,000 and increase anywhere from £25,000 to £65,000. Or as a freelance photographer, your earnings will be linked to what you are able to charge and how much work you can secure.

GRAPHIC DESIGNER

£15,000 - £35+

Starting salaries are in the region of £15,000 to £19,000. Once you've gained some experience, salaries can rise between £25,000 to £35,000+

OTHER ARTS RELATED CAREERS:

- **Printmaker**
- **Illustrator**
- **Theatre/Film Technician**
- **Director**
- **Set Designer**
- **Community Arts Worker**
- **Higher Education Lecturer**
- **Curator**
- **Interior and Spatial Designer**
- **Commercial Art Gallery Manager**
- **Museum/Gallery Exhibitions Officer**
- **Web Designer**

ART & DESIGN PRACTICE

LEVEL 3

THIS COURSE IS DESIGNED TO GIVE YOU A BROAD SKILLS BASE IN 2D, 3D, DIGITAL AND PHOTOGRAPHIC ART FORMS, DEVELOPING AND REALISING YOUR CREATIVE IDEAS.

You will have access to multiple studio spaces and industry standard photographic and digital technology. Throughout your studies your work will be regularly exhibited and you will be involved in planning, installing and running your own exhibition.

COURSE CONTENT

- Art & Design in Context
- Exploring Digital, Portrait and Landscape Photography
- 2D and 3D Materials, Techniques and Processes
- Fine Art Drawing and Printmaking
- Using Digital Technology in Graphic Design
- Understanding Specialist Art or Design Briefs

DETAILS

ENTRY REQUIREMENTS

5 GCSEs or equivalent at Grade 4 or above including English (and ideally Maths).

Progression from Level 2 (at Merit standard) and improvement in Maths & or English.

START DATE

September

END DATE

June

DURATION

2 years

COURSE COST

Aged 16–18: FREE!

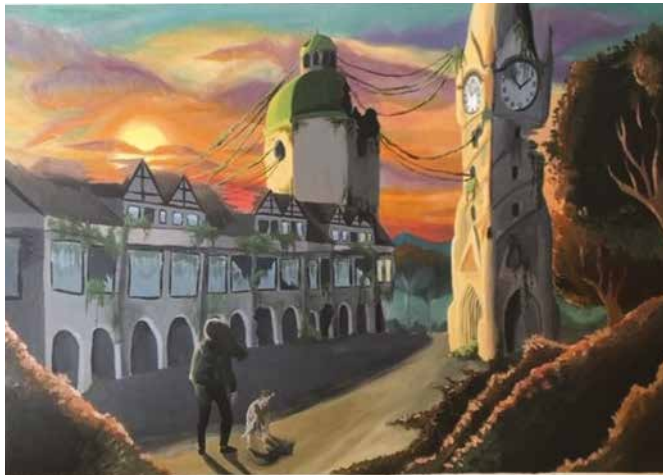
Aged 19+: See p3 for funding options

PROGRESSION OPPORTUNITIES

Students who successfully complete this course can progress on to:

- Degree level study at university or specialist Institution
- Employment

CASE STUDY



ABIGAIL STANIFORTH



I am studying a **BTEC Level 3 Extended Diploma in Art and Design**. I would love to go to

university to study model making. I want to create sets and environments for stop-motion animations in TV and film. I feel that this course was the perfect course to get me there.

This year I have had the opportunity to explore lots of different elements of art and try new tools and techniques. I have enjoyed lots of different aspects of the course especially learning how to use photoshop and light room with drawing tablets to create images and building models and dioramas.

My tutors for this year have been incredibly supportive of my learning journey. They have helped me learn new techniques in fine art using new mediums, encouraged me to reflect on and improve my work, and celebrated my successes

and achievements. I feel all my tutors are really approachable for issues and concerns I have within myself or my work.

The facilities at college are very good, there is plenty of space for big projects and lots of equipment available in classrooms if needed. We have access to studios with lighting rigs and greenscreen to support our photography projects, laptops and tablets for annotation and illustration, and a cupboard filled with tools and materials for prop-making and sculpture.

I would 100% recommend Loughborough College to new students because it has helped me to learn new skills, become more confident and accomplish my goals. I have thoroughly enjoyed my time at the college, it's a really friendly and welcoming environment to work in.

FEATURES & BENEFITS

Level 2 and Level 3 PERFORMING ARTS

- Outstanding rehearsal and performance facilities, including a 200-seat theatre, as well as a dance and drama studio
- Industry-experienced tutors
- Opportunities to book rehearsal studios outside of class times
- All units and assessments are work related learning and have a strong focus on employability and skills development
- Students will have the opportunity to engage with professionals and industry throughout their studies



Level 2 ART AND DESIGN SKILLS

- All units and assessments are work related learning and have a strong focus on employability and skills development
- All Creative Arts students will complete 20 hours of work experience alongside their course. Students will have the opportunity to engage with professionals and industry throughout their studies
- All students who have not achieved a grade C/4 or above in GCSE English and Maths will get the chance to study Maths and English alongside their Level 2 course, either at GCSE level or Functional Skills

Level 3 ART AND DESIGN PRACTICE

- Emphasis is placed on practical responses to set tasks, through a mixture of art disciplines such as photography, mixed media, graphics, digital art, 2D and 3D, printmaking, and fine art
- As part of the programme of study you will have opportunities to go on trips, visit exhibitions and also hear from guest speakers

FAQs

I NEED EXTRA SUPPORT WITH MY STUDIES. WHAT HELP CAN I GET AT LOUGHBOROUGH COLLEGE?

There are staff on hand to help you with your academic progress. Our specialist advisors can also help with additional requirements, and we have a fantastic team of learning support assistants who can provide in-class assistance.

WHAT FUNDING IS AVAILABLE FOR TUITION FEES?

There are no tuition fees for full-time students under 19 who are enrolled on a Further Education course. If you're over 18, see page 3 for guidance.

WHAT HAPPENS IF I DON'T GET THE GRADES I WAS EXPECTING?

If you don't get your predicted results, don't panic! Our Student Recruitment team is on hand to help, and we'll make sure that we find another course that is suitable for you.

CAN I WORK A PART-TIME JOB WHILST STUDYING?

We recommend no more than 8-9 working hours per week. Research has shown that 10+ hours can negatively affect academic achievement, so make sure you're prioritising correctly.

CAN I SPEAK TO SOMEBODY ABOUT THE COURSES YOU OFFER?

Yes, we have a dedicated Student Recruitment advisory team who will be happy to provide you with the information on our courses and answer any questions you may have. Give us a call on **01509 618375** or e-mail us at **admissions@loucoll.ac.uk**

DOES THE COLLEGE OFFER FINANCIAL HELP?

We offer a bursary fund to help with additional costs associated with your course, such as transport, kit or uniform, and childcare costs. Eligibility is based on household income. You don't need to request a bursary application form, as they are sent to everyone who has applied to study with us (usually in July/August). Further information is available here: **www.loucoll.ac.uk/student-services**

CAN I CHOOSE TO DO ANOTHER COURSE IF I CHANGE MY MIND?

Yes. You can change your course before enrolment by contacting the Student Recruitment team on **01509 618375**.

If you've already started your course and find that it isn't right for you, don't worry; there will be opportunities for you to discuss suitable alternatives.

WHAT'S THE DEADLINE FOR SUBMITTING AN APPLICATION?

As a college we would advise you to try and apply by Friday 26th April 2024. This will allow you to get the most out of what we can offer you, helping you to make the important decisions about the courses you're interested in. We will however continue to consider applications made after this date.

Loughborough

COLLEGE est. 1909

Loughborough College
Radmoor Road
Loughborough
Leicestershire
LE11 3BT

01509 618375
info@loucoll.ac.uk
www.loucoll.ac.uk



Facebook

Loughborough College



X

@lborocollege



Instagram

@lborocollege

Disclaimer:

Information provided is correct at the time of print and the college accepts no liability for errors or omissions.

Details can be subject to change without notice, including the provision of courses, times, and dates, and fees and charges can be levied.

© Loughborough College 2023